

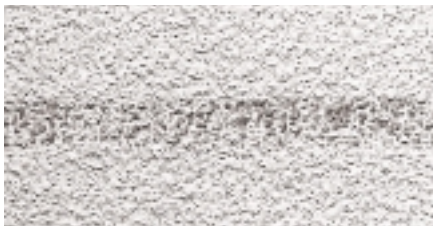
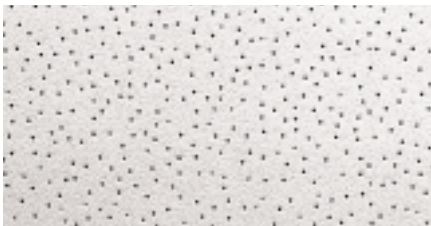


Scrubability

Scrubability Test (ASTM D 2486)

Ceilings installed in laboratories, clean rooms and food preparation areas are required to meet scrubability standards – and, sometimes, other specific criteria. (See Special Applications Selector, pages 14-17.) The Scrubability test evaluates a ceiling's ability to withstand scrubbing.

- The test uses scrubbing action of a hard bristle brush.
- It measures a ceiling surface's resistance to repeated scrub cycles.
- Ratings are based on either the ability of the surface to withstand up to 150 scrub cycles without breakthrough or the extent of abrasion.



These photos show the excellent scrubability of VL versus a less scrubable ceiling.