

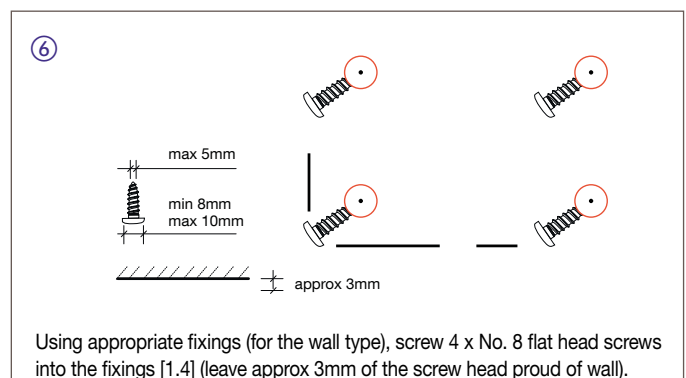
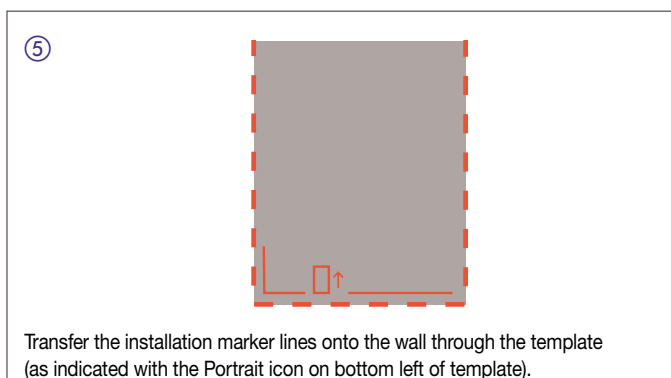
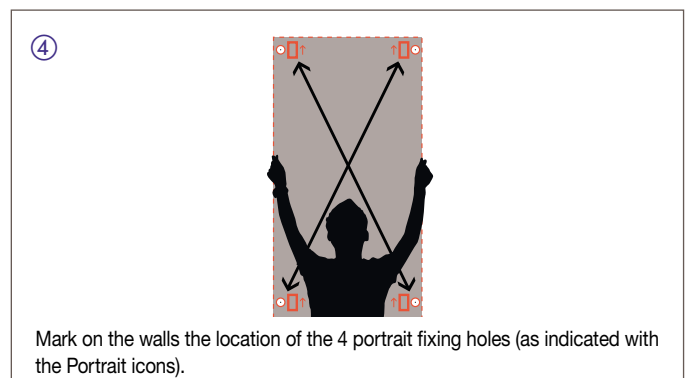
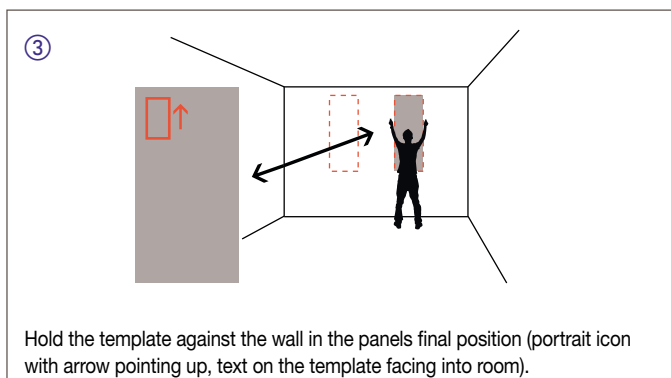
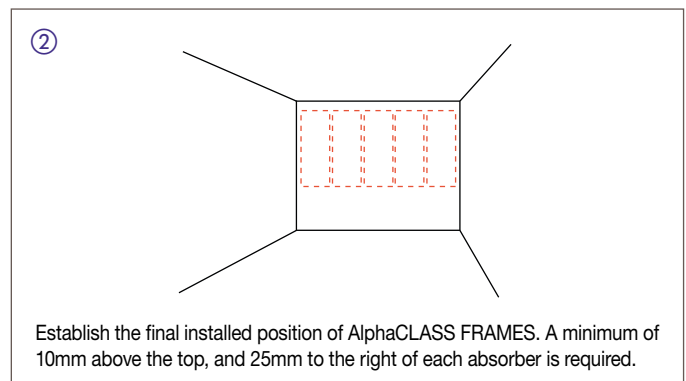
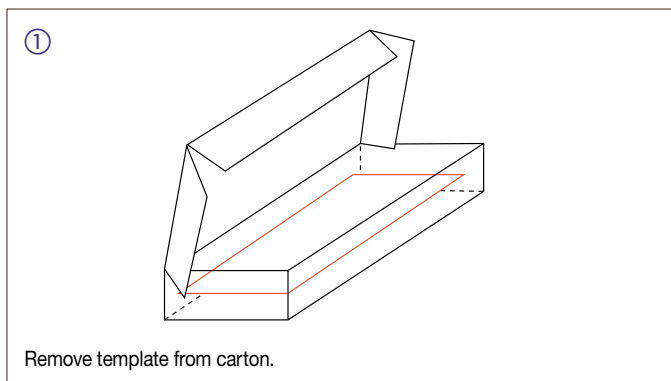
AlphaCLASS FRAMES

Installation Guide - Portrait installation

AlphaCLASS FRAMES can be installed in two ways:

- 1 as an individual panel / as a series of individual panels with a minimum 25mm gap between adjacent panels; or
- 2 as a series of panels installed adjacent to each other with no gap.

1 INDIVIDUAL PANEL INSTALLATION



⑦

Position the panel with the pop riveted bar on the left. Line up the bottom left corner of the AlphaCLASS FRAMES with the installation marker lines [1.5] (This will align the absorber fixing holes with the screws [1.6]). Push the wall absorber to engage on the screws.

⑧

Check screws are engaged in the fixing hole by pulling up gently. Drop the panel approx. 3mm before sliding 13mm to the left. The panel will then drop down 6mm and is now installed.

⑨

To remove the AlphaCLASS FRAMES, lift the panel approx. 6mm and slide to the right approx. 13mm. The panel should then be able to be disengaged from the fixing screws.

⑩

A screw fixed into the wall directly above the of the panel will prevent unplanned removal. Configurations of multiple AlphaCLASS FRAMES panels with a minimum 25mm gap can be installed and demounted in any order.

2 GROUPING INSTALLATION

- ① AlphaCLASS FRAMES installed as a series of panels adjacent to each other, must be installed in sequence. The furthest left panel must be installed first and the rest of the panels installed in sequence working to the right.
- ② Follow steps [1.1] to [1.10] as per the individual/ spaced panels, but n step [1.2] do not leave a horizontal gap between panels (25mm is still needed to the right of the panel furthest on the right). Ensure that panels are installed in the correct order as described in [2.1]. To demount the panels, they must be removed in the opposite order. Start with the furthest right and then work sequentially to the left.

Armstrong World Industries Ltd.
 Building Products Division
 Armstrong House, 38 Market Square,
 Uxbridge UB8 1NG
 Tel. 0800 371849 (UK) **FREEPHONE**
 1800 409002 (ROI)
 Fax 00 44 (0) 1895 274287
 sales-support@armstrong.com
 www.armstrongceilings.co.uk
 www.armstrongceilings.ie
 www.armstrongceilings.eu

Armstrong[®]
 CEILING SOLUTIONS