

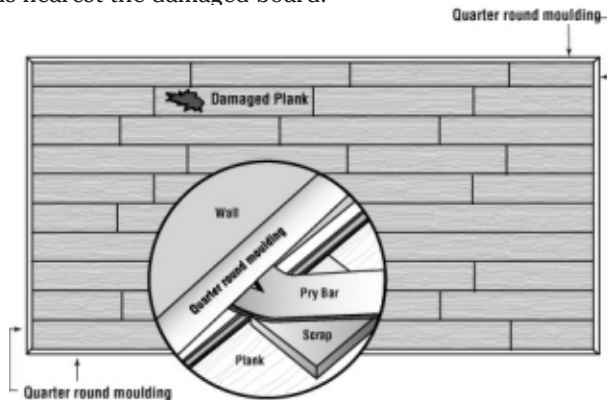
P. REPAIRING LOCKING LAMINATE

Minor Repairs

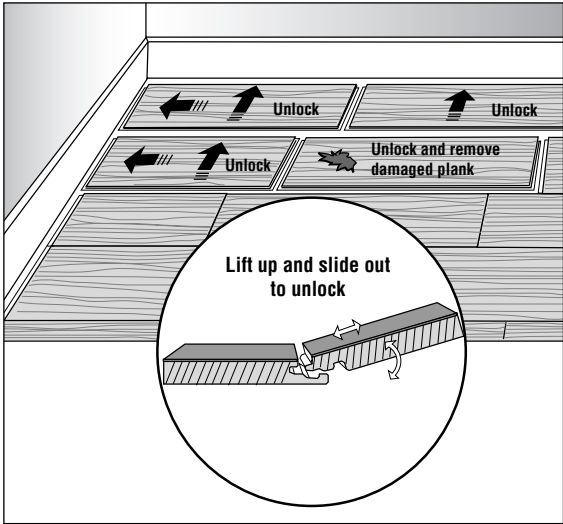
- Minor chips or scratches can easily be repaired using the correct color-matched Laminate Flooring Touch-Up Kit or Filler Kit.

Major Repairs - Close to a Parallel Wall

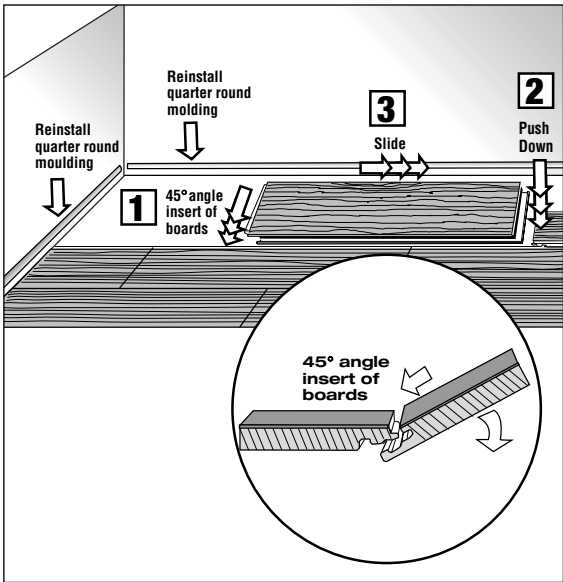
1. In case of a major problem with the locking system, it is possible to replace an entire piece of the flooring. In most cases, just remove the moulding from the walls nearest the damaged board.



2. Remove the boards by unlocking them. You can work in either direction, carefully working back to the damaged piece.

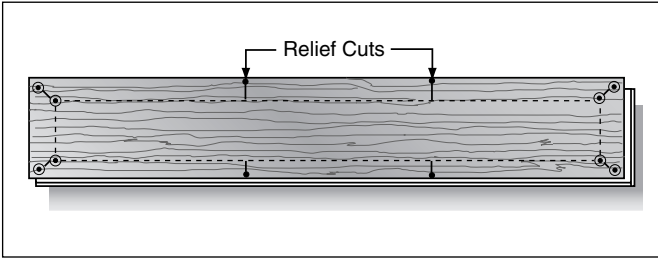


3. Replace the damaged board with a new one. Reassemble the floor.

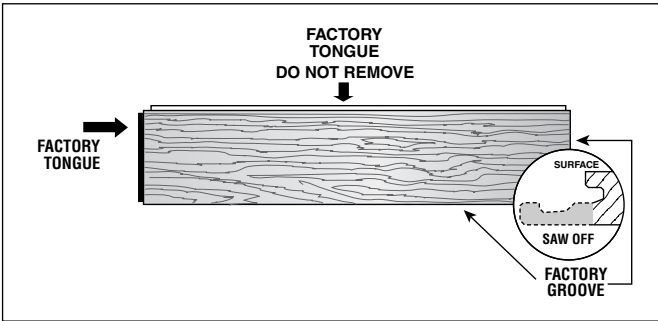


Major repairs - In Center of Room (Repair is Permanent)

1. Check replacement board for damage, size and fit.
2. Mark damaged board 1-1/2" from ends and sides. Drill 3/16" holes in corners and at relief cuts.



3. Set saw depth to board thickness. Cut along lines and remove center section. Make relief cuts using drilled holes as visible stop.
4. Carefully lift and pull center length cut first, then work into corners to remove end pieces last.
5. If the floor was installed with Armstrong Laminate Glue, clean factory edges using a sharp chisel. Remove glue from top of groove using a tongue and groove cleaner tool or a small piece of laminate with tongue edge.
6. Prepare replacement board by removing bottom of groove on end and side.



7. Carefully remove tongue from end of board with sharp utility knife.
8. Clean area thoroughly and test fit. Check for high edges and adjust fit using 120-grit sandpaper.
9. Apply Armstrong Laminate Glue to top of tongue and bottom of groove.
10. Carefully place the new piece into the opening. Press firmly.
11. Remove all residual glue on the surface with a clean, damp cloth.
12. Make sure all edges are even on either side of the joints. Apply heavy pressure for at least 24 hours. Use heavy weights.
13. Make sure that the weight is evenly distributed across the new piece.

