

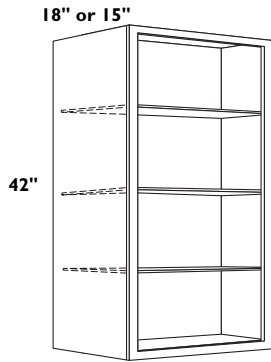
**42" HIGH x 15" or 18" DEEP
SINGLE DOOR WALL CABINETS**

- Three 5/8" thick adjustable shelves
- Three hinges per door
- Specify L or R door hinging
- * Bel Air and Coronet are not available (see W2442BDx15 or W2442BDx18 below)

W1242 x 15 L or R	W1242 x 18 L or R
W1542 x 15 L or R	W1542 x 18 L or R
W1842 x 15 L or R	W1842 x 18 L or R
W2142 x 15 L or R	W2142 x 18 L or R
*W2442 x 15 L or R	*W2442 x 18 L or R

**ALTERED
DEPTH
WALL
CABINETS**

NOTE FOR ALL 36" WALL CABINETS:
Not available in Altair, Bali, Branford, Meridian and Shasta.

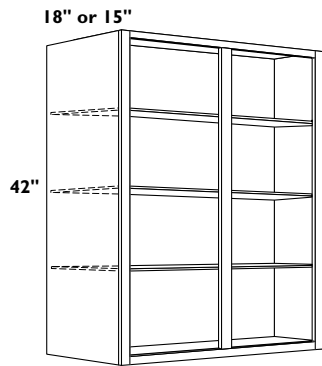


**42" HIGH x 15" or 18" DEEP
BUTT DOOR WALL CABINETS**

- Three 5/8" thick adjustable shelves
- Three hinges per door
- * Bel Air and Coronet are only available as butt door cabinets in 24" width

W2442BD x 15 L or R	W2442BD x 18 L or R
---------------------	---------------------

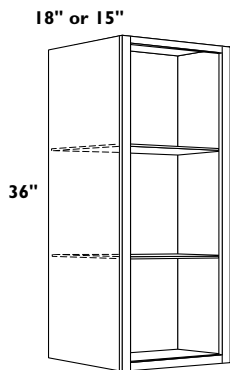
NOTE: Special precaution should be taken when installing altered depth wall cabinetry deeper than 12". Cabinets should be firmly secured to adjacent cabinetry of equal or greater depth.



**42" HIGH x 15" or 18" DEEP
DOUBLE DOOR WALL CABINETS**

- Three 5/8" thick adjustable shelves
- Three hinges per door

W2742 x 15	W2742 x 18
W3042 x 15	W3042 x 18
W3342 x 15	W3342 x 18
W3642 x 15	W3642 x 18
W4242 x 15	W4242 x 18



**36" HIGH x 15" or 18" DEEP
SINGLE DOOR WALL CABINETS**

- Two 5/8" thick adjustable shelves
- Two hinges per door
- Specify L or R door hinging
- * Bel Air and Coronet are not available (see W2436BDx15 or W2436BDx18 below)

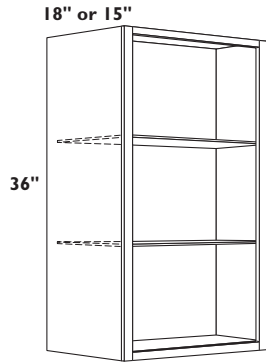
W1236 x 15 L or R	W1236 x 18 L or R
W1536 x 15 L or R	W1536 x 18 L or R
W1836 x 15 L or R	W1836 x 18 L or R
W2136 x 15 L or R	W2136 x 18 L or R
*W2436 x 15 L or R	*W2436 x 18 L or R

www.armstrong.com

ALTERED DEPTH WALL CABINETS

NOTE FOR ALL 36" WALL CABINETS:
Not available in Altair, Bali, Branford, Meridian and Shasta.

NOTE: Special precaution should be taken when installing altered depth wall cabinetry deeper than 12". Cabinets should be firmly secured to adjacent cabinetry of equal or greater depth.

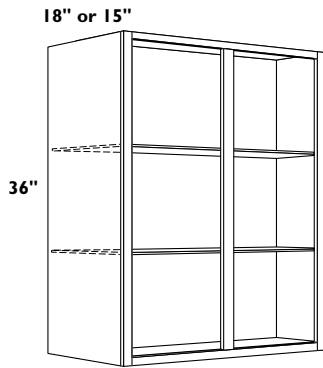


36" HIGH x 15" or 18" DEEP BUTT DOOR WALL CABINETS

- Three 5/8" thick adjustable shelves
- Three hinges per door
- * Bel Air and Coronet are only available as butt door cabinets in 24" width

W2436BD x 15 L or R

W2436BD x 18 L or R

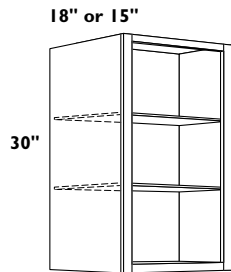


36" HIGH x 15" or 18" DEEP DOUBLE DOOR WALL CABINETS

- Two 5/8" thick adjustable shelves
- Two hinges per door

W2736 x 15
W3036 x 15
W3336 x 15
W3636 x 15
W4236 x 15

W2736 x 18
W3036 x 18
W3336 x 18
W3636 x 18
W4236 x 18

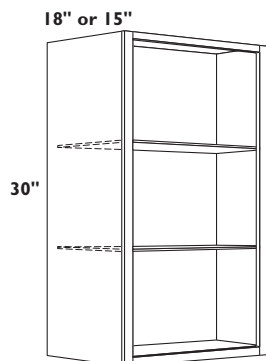


30" HIGH x 15" or 18" DEEP SINGLE DOOR WALL CABINETS

- Two 5/8" thick adjustable shelves
- Two hinges per door
- Specify L or R door hinging
- * Bel Air and Coronet are not available (see W2430BDx15 or W2430BDx18 below)

W1230 x 15 L or R
W1530 x 15 L or R
W1830 x 15 L or R
W2130 x 15 L or R
*W2430 x 15 L or R

W1230 x 18 L or R
W1530 x 18 L or R
W1830 x 18 L or R
W2130 x 18 L or R
*W2430 x 18 L or R



30" HIGH x 15" or 18" DEEP BUTT DOOR WALL CABINETS

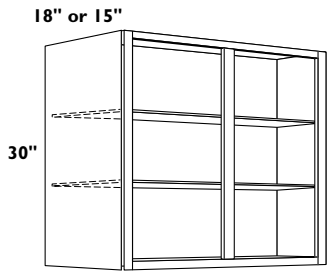
- Two 5/8" thick adjustable shelves
- Three hinges per door
- * Bel Air and Coronet are only available as butt door cabinets in 24" width

W2430BD x 15 L or R

W2430BD x 18 L or R

ALTERED DEPTH WALL CABINETS

NOTE: Special precaution should be taken when installing altered depth wall cabinetry deeper than 12". Cabinets should be firmly secured to adjacent cabinetry of equal or greater depth.

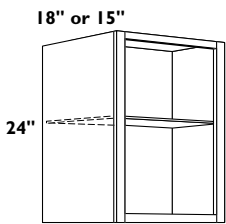


30" HIGH x 15" or 18" DEEP DOUBLE DOOR WALL CABINETS

- Two 5/8" thick adjustable shelves
- Two hinges per door

W2730 x 15
W3030 x 15
W3330 x 15
W3630 x 15
W4230 x 15

W2730 x 18
W3030 x 18
W3330 x 18
W3630 x 18
W4230 x 18

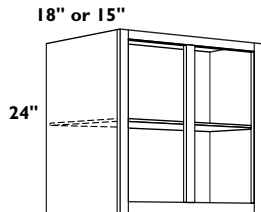


24" HIGH x 15" or 18" DEEP SINGLE DOOR WALL CABINETS

- One 5/8" thick adjustable shelf
 - Two hinges per door
 - Specify L or R door hinging
- * Bel Air and Coronet have two butt doors on W2424x15 or W2424x18

W1224 x 15 L or R
W1524 x 15 L or R
W1824 x 15 L or R
W2124 x 15 L or R
*W2424 x 15 L or R

W1224 x 18 L or R
W1524 x 18 L or R
W1824 x 18 L or R
W2124 x 18 L or R
*W2424 x 18 L or R

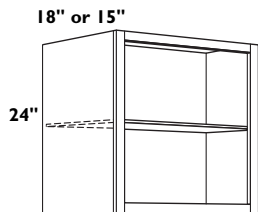


24" HIGH x 15" or 18" DEEP DOUBLE DOOR WALL CABINETS

- One 5/8" thick adjustable shelf
- Two hinges per door

W2724 x 15
W3024 x 15
W3324 x 15
W3624 x 15
W4224 x 15

W2724 x 18
W3024 x 18
W3324 x 18
W3624 x 18
W4224 x 18



24" HIGH x 15" or 18" DEEP BUTT DOOR WALL CABINETS

- One 5/8" thick adjustable shelf
- Two hinges per door

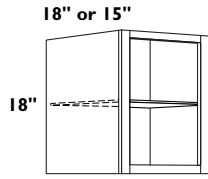
W2724BD x 15
W3024BD x 15
W3324BD x 15

W2724BD x 18
W3024BD x 18
W3324BD x 18

www.armstrong.com

ALTERED DEPTH WALL CABINETS

NOTE: Special precaution should be taken when installing altered depth wall cabinetry deeper than 12". Cabinets should be firmly secured to adjacent cabinetry of equal or greater depth.

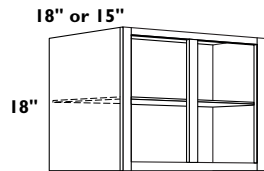


18" HIGH x 15" or 18" DEEP SINGLE DOOR WALL CABINETS

- One 5/8" thick adjustable shelf
- Two hinges per door
- Specify L or R door hinging

W1818 x 15 L or R
W2118 x 15 L or R

W1818 x 18 L or R
W2118 x 18 L or R

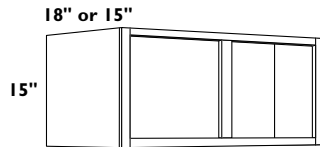


18" HIGH x 15" or 18" DEEP DOUBLE DOOR WALL CABINETS

- One 5/8" thick adjustable shelf
- Two hinges per door

W2418 x 15
W3018 x 15
W3618 x 15
W4218 x 15

W2418 x 18
W3018 x 18
W3618 x 18
W4218 x 18



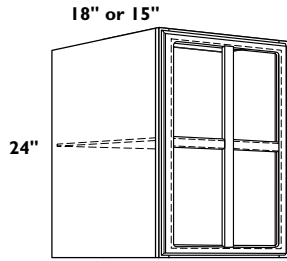
15" HIGH x 15" or 18" DEEP DOUBLE DOOR WALL CABINETS

- Two hinges per door

W3015 x 15
W3615 x 15

W3015 x 18
W3615 x 18

ALTERED DEPTH MULLION DOOR WALL CABINETS



24" HIGH x 15" or 18" DEEP SINGLE MULLION DOOR WALL CABINETS

- One 5/8" thick adjustable shelf
- Two hinges per door
- Specify L or R door hinging
- Glass not included
- Silicone adhesive recommended for all glass installations in Mullion Doors
- Mullion door cabinets do not automatically come with finished interiors. For finished interior cabinets, prefix FI to the nomenclature
- FI available in Allwood construction only with Oak, Maple or Cherry veneer plywood interior.

MW1524 x 15 L or R
MW1824 x 15 L or R

MW1524 x 18 L or R
MW1824 x 18 L or R

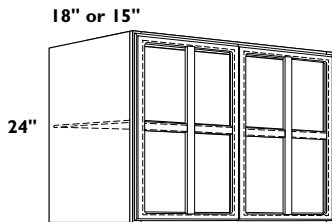
FIMW1524 x 15 L or R
FIMW1824 x 15 L or R

FIMW1524 x 18 L or R
FIMW1824 x 18 L or R

SEE PAGE 37 FOR SPECIFIC DOOR STYLE AVAILABILITY.

NOT AVAILABLE IN BRANFORD OR CARUTH. MUST ORDER HAMPTON OR BERKSHIRE FOR MATCHING DOOR PROFILE.

NOTE: Special precaution should be taken when installing altered depth wall cabinetry deeper than 12". Cabinets should be firmly secured to adjacent cabinetry of equal or greater depth.



24" HIGH x 15" or 18" DEEP DOUBLE MULLION DOOR WALL CABINETS

- One 5/8" thick adjustable shelf
- Two hinges per door
- Glass not included
- Silicone adhesive recommended for all glass installations in Mullion Doors
- Mullion door cabinets do not automatically come with finished interiors. For finished interior cabinets, prefix FI to the nomenclature
- FI available in Allwood construction only with Oak, Maple or Cherry veneer plywood interior.

MW3024 x 15
MW3624 x 15

MW3024 x 18
MW3624 x 18

FIMW3024 x 15
FIMW3624 x 15

FIMW3024 x 18
FIMW3624 x 18

www.armstrong.com

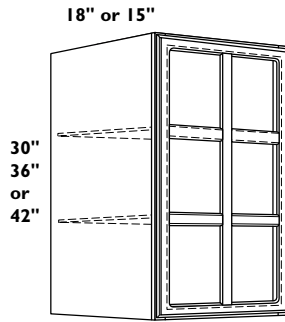
ALTERED DEPTH MULLION DOOR WALL CABINETS

ONE WEEK EXTENDED LEAD TIME ON 36" HIGH MULLION DOORS.

SEE PAGE 37 FOR SPECIFIC DOOR STYLE AVAILABILITY.

NOT AVAILABLE IN BRANFORD OR CARUTH. MUST ORDER HAMPTON OR BERKSHIRE FOR MATCHING DOOR PROFILE.

NOTE: Special precaution should be taken when installing altered depth wall cabinetry deeper than 12". Cabinets should be firmly secured to adjacent cabinetry of equal or greater depth.



30", 36" or 42" HIGH x 15" or 18" DEEP SINGLE MULLION DOOR WALL CABINETS

- Two 5/8" thick adjustable shelves, 42" cabinets have three shelves
- Two hinges per door, 42" cabinets have three hinges per door
- Specify L or R door hinging
- Glass not included
- Silicone adhesive recommended for all glass installations in Mullion Doors
- Mullion door cabinets do not automatically come with finished interiors. For finished interior cabinets, prefix FI to the nomenclature
- FI available in Allwood construction only with Oak, Maple or Cherry veneer plywood interior

MW1530 x 15 L or R
MW1830 x 15 L or R
MW2130 x 15 L or R
FIMW1530 x 15 L or R
FIMW1830 x 15 L or R
FIMW2130 x 15 L or R

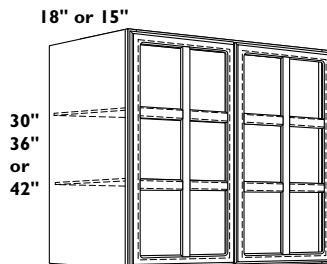
MW1536 x 15 L or R
MW1836 x 15 L or R
MW2136 x 15 L or R
FIMW1536 x 15 L or R
FIMW1836 x 15 L or R
FIMW2136 x 15 L or R

MW1542 x 15 L or R
MW1842 x 15 L or R
MW2142 x 15 L or R
FIMW1542 x 15 L or R
FIMW1842 x 15 L or R
FIMW2142 x 15 L or R

MW1530 x 18 L or R
MW1830 x 18 L or R
MW2130 x 18 L or R
FIMW1530 x 18 L or R
FIMW1830 x 18 L or R
FIMW2130 x 18 L or R

MW1536 x 18 L or R
MW1836 x 18 L or R
MW2136 x 18 L or R
FIMW1536 x 18 L or R
FIMW1836 x 18 L or R
FIMW2136 x 18 L or R

MW1542 x 18 L or R
MW1842 x 18 L or R
MW2142 x 18 L or R
FIMW1542 x 18 L or R
FIMW1842 x 18 L or R
FIMW2142 x 18 L or R



30", 36" or 42" HIGH x 15" or 18" DEEP DOUBLE MULLION DOOR WALL CABINETS

- Two 5/8" thick adjustable shelves, 42" cabinets have three shelves
- Two hinges per door, 42" cabinets have three hinges per door
- Glass not included
- Silicone adhesive recommended for all glass installations in Mullion Doors
- Mullion door cabinets do not automatically come with finished interiors. For finished interior cabinets, prefix FI to the nomenclature
- FI available in Allwood construction only with Oak, Maple or Cherry veneer plywood interior

MW3030 x 15
MW3630 x 15
MW4230 x 15
FIMW3030 x 15
FIMW3630 x 15
FIMW4230 x 15

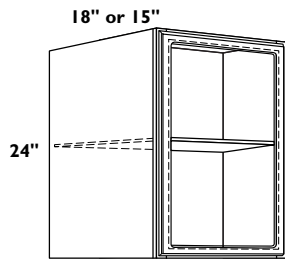
MW3036 x 15
MW3636 x 15
MW4236 x 15
FIMW3036 x 15
FIMW3636 x 15
FIMW4236 x 15

MW3042 x 15
MW3642 x 15
MW4242 x 15
FIMW3042 x 15
FIMW3642 x 15
FIMW4242 x 15

MW3030 x 18
MW3630 x 18
MW4230 x 18
FIMW3030 x 18
FIMW3630 x 18
FIMW4230 x 18

MW3036 x 18
MW3636 x 18
MW4236 x 18
FIMW3036 x 18
FIMW3636 x 18
FIMW4236 x 18

MW3042 x 18
MW3642 x 18
MW4242 x 18
FIMW3042 x 18
FIMW3642 x 18
FIMW4242 x 18



**24" HIGH x 15" or 18" DEEP
SINGLE DOOR CUT FOR GLASS WALL CABINETS**

- One 5/8" thick adjustable shelf
- Two hinges per door
- Specify L or R door hinging
- Glass not included
- Silicone adhesive recommended for all glass installations
- Door cut for glass cabinets do not automatically come with finished interiors. For finished interior cabinets, prefix FI to the nomenclature
- FI available in Allwood construction only with Oak, Maple or Cherry veneer plywood interior.

DGW1524 x 15 L or R
DGW1824 x 15 L or R

DGW1524 x 18 L or R
DGW1824 x 18 L or R

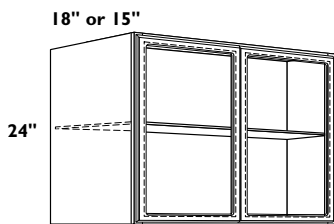
FIDG1524 x 15 L or R
FIDG1824 x 15 L or R

FIDG1524 x 18 L or R
FIDG1824 x 18 L or R

**ALTERED
DEPTH
DOOR
CUT FOR
GLASS WALL
CABINETS**

AVAILABLE IN
SEDONA AND
SERENITY ONLY.

NOTE: Special precaution should be taken when installing altered depth wall cabinetry deeper than 12". Cabinets should be firmly secured to adjacent cabinetry of equal or greater depth.



**24" HIGH x 15" or 18" DEEP
DOUBLE DOOR CUT FOR GLASS WALL CABINETS**

- One 5/8" thick adjustable shelf
- Two hinges per door
- Glass not included
- Silicone adhesive recommended for all glass installations
- Door cut for glass cabinets do not automatically come with finished interiors. For finished interior cabinets, prefix FI to the nomenclature
- FI available in Allwood construction only with Oak, Maple or Cherry veneer plywood interior.

DGW3024 x 15
DGW3624 x 15

DGW3024 x 18
DGW3624 x 18

FIDGW3024 x 15
FIDGW3624 x 15

FIDGW3024 x 18
FIDGW3624 x 18

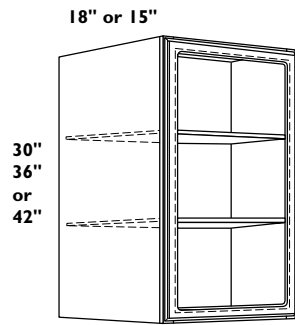
www.armstrong.com

ALTERED DEPTH DOOR CUT FOR GLASS WALL CABINETS

ONE WEEK EXTENDED LEAD TIME ON 36" HIGH DOORS CUT FOR GLASS CABINETS.

AVAILABLE IN SEDONA AND SERENITY ONLY.

NOTE: Special precaution should be taken when installing altered depth wall cabinetry deeper than 12". Cabinets should be firmly secured to adjacent cabinetry of equal or greater depth.



30", 36" or 42" HIGH x 15" or 18" DEEP SINGLE MULLION DOOR WALL CABINETS

- Two 5/8" thick adjustable shelves, 42" cabinets have three shelves
- Two hinges per door, 42" cabinets have three hinges per door
- Specify L or R door hinging
- Glass not included
- Silicone adhesive recommended for all glass installations
- Door cut for glass cabinets do not automatically come with finished interiors. For finished interior cabinets, prefix FI to the nomenclature
- FI available in Allwood construction only with Oak, Maple or Cherry veneer plywood interior

DGW1530 x 15 L or R
 DGW1830 x 15 L or R
 DGW2130 x 15 L or R
 FIDG1530 x 15 L or R
 FIDG1830 x 15 L or R
 FIDG2130 x 15 L or R

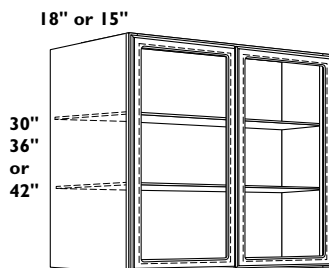
DGW1536 x 15 L or R
 DGW1836 x 15 L or R
 DGW2136 x 15 L or R
 FIDG1536 x 15 L or R
 FIDG1836 x 15 L or R
 FIDG2136 x 15 L or R

DGW1542 x 15 L or R
 DGW1842 x 15 L or R
 DGW2142 x 15 L or R
 FIDG1542 x 15 L or R
 FIDG1842 x 15 L or R
 FIDG2142 x 15 L or R

DGW1530 x 18 L or R
 DGW1830 x 18 L or R
 DGW2130 x 18 L or R
 FIDG1530 x 18 L or R
 FIDG1830 x 18 L or R
 FIDG2130 x 18 L or R

DGW1536 x 18 L or R
 DGW1836 x 18 L or R
 DGW2136 x 18 L or R
 FIDG1536 x 18 L or R
 FIDG1836 x 18 L or R
 FIDG2136 x 18 L or R

DGW1542 x 18 L or R
 DGW1842 x 18 L or R
 DGW2142 x 18 L or R
 FIDG1542 x 18 L or R
 FIDG1842 x 18 L or R
 FIDG2142 x 18 L or R



30", 36" or 42" HIGH x 15" or 18" DEEP DOUBLE DOOR CUT FOR GLASS WALL CABINETS

- Two 5/8" thick adjustable shelves, 42" cabinets have three shelves
- Two hinges per door, 42" cabinets have three hinges per door
- Glass not included
- Silicone adhesive recommended for all glass installations
- Door cut for glass cabinets do not automatically come with finished interiors. For finished interior cabinets, prefix FI to the nomenclature
- FI available in Allwood construction only with Oak, Maple or Cherry veneer plywood interior

DGW3030 x 15
 DGW3630 x 15
 DGW4230 x 15
 FIDGW3030 x 15
 FIDGW3630 x 15
 FIDGW4230 x 15

DGW3036 x 15
 DGW3636 x 15
 DGW4236 x 15
 FIDGW3036 x 15
 FIDGW3636 x 15
 FIDGW4236 x 15

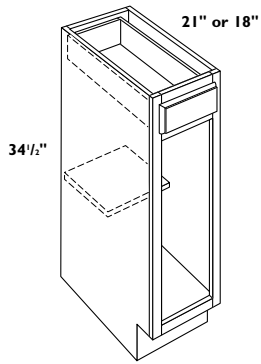
DGW3042 x 15
 DGW3642 x 15
 DGW4242 x 15
 FIDGW3042 x 15
 FIDGW3642 x 15
 FIDGW4242 x 15

DGW3030 x 18
 DGW3630 x 18
 DGW4230 x 18
 FIDGW3030 x 18
 FIDGW3630 x 18
 FIDGW4230 x 18

DGW3036 x 18
 DGW3636 x 18
 DGW4236 x 18
 FIDGW3036 x 18
 FIDGW3636 x 18
 FIDGW4236 x 18

DGW3042 x 18
 DGW3642 x 18
 DGW4242 x 18
 FIDGW3042 x 18
 FIDGW3642 x 18
 FIDGW4242 x 18

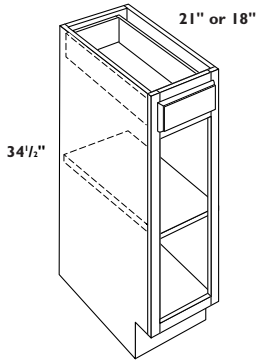
ALTERED DEPTH BASE CABINETS



18" or 21" DEEP SINGLE DOOR AND DRAWER BASE CABINETS

- One 5/8" thick adjustable half depth shelf
- Two hinges per door
- Specify L or R door hinging
- * Bel Air and Coronet have two butt doors on B24x18 and B24x21

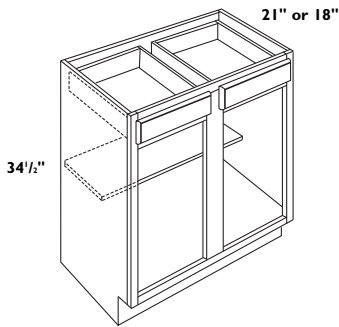
B12 x 18 L or R	B12 x 21 L or R
B15 x 18 L or R	B15 x 21 L or R
B18 x 18 L or R	B18 x 21 L or R
B21 x 18 L or R	B21 x 21 L or R
*B24 x 18 L or R	*B24 x 21 L or R



18" or 21" DEEP SINGLE DOOR AND DRAWER BASE CABINETS WITH FULL DEPTH SHELF

- One 5/8" thick adjustable full depth shelf
- Two hinges per door
- Specify L or R door hinging
- * Bel Air and Coronet have two butt doors on B24FDSx18 and B24FDSx21

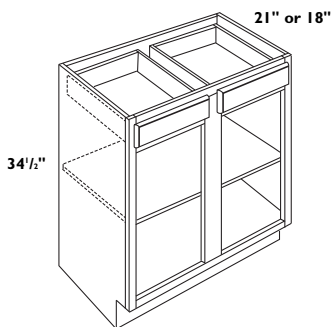
B12FDS x 18 L or R	B12FDS x 21 L or R
B15FDS x 18 L or R	B15FDS x 21 L or R
B18FDS x 18 L or R	B18FDS x 21 L or R
B21FDS x 18 L or R	B21FDS x 21 L or R
*B24FDS x 18 L or R	*B24FDS x 21 L or R



18" or 21" DEEP DOUBLE DOOR AND DRAWER BASE CABINETS

- One 5/8" thick adjustable half depth shelf
- Two hinges per door

B27 x 18	B27 x 21
B30 x 18	B30 x 21
B33 x 18	B33 x 21
B36 x 18	B36 x 21
B42 x 18	B42 x 21



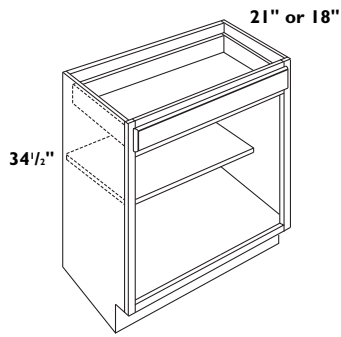
18" or 21" DEEP DOUBLE DOOR AND DRAWER BASE CABINETS WITH FULL DEPTH SHELF

- One 5/8" thick adjustable full depth shelf
- Two hinges per door

B27FDS x 18	B27FDS x 21
B30FDS x 18	B30FDS x 21
B33FDS x 18	B33FDS x 21
B36FDS x 18	B36FDS x 21
B42FDS x 18	B42FDS x 21

www.armstrong.com

ALTERED DEPTH BASE CABINETS

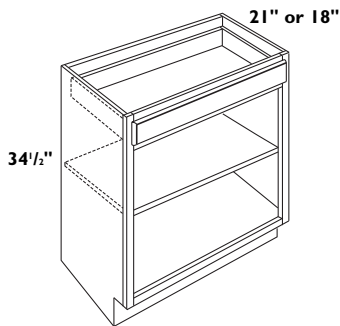


18" or 21" DEEP BUTT DOOR AND WIDE DRAWER BASE CABINETS

- One 5/8" thick adjustable half depth shelf
- Two hinges per door

B27BD x 18
B30BD x 18
B33BD x 18

B27BD x 21
B30BD x 21
B33BD x 21

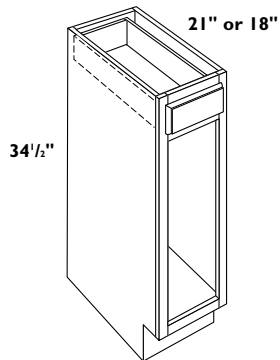


18" or 21" DEEP BUTT DOOR AND WIDE DRAWER BASE CABINETS WITH FULL DEPTH SHELF

- One 5/8" thick adjustable full depth shelf
- Two hinges per door

B27BDFDS x 18
B30BDFDS x 18
B33BDFDS x 18

B27BDFDS x 21
B30BDFDS x 21
B33BDFDS x 21

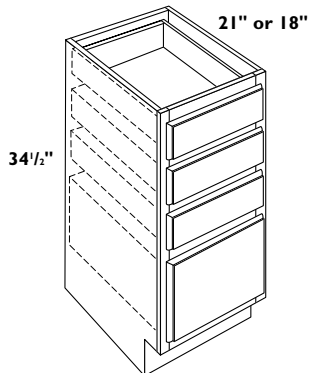


18" or 21" DEEP SINGLE DOOR AND DRAWER BASE CABINETS FOR ACCESSORIES

- Two hinges per door
- Specify L or R door hinging
- * Bel Air and Coronet have two butt doors on BA24x18 and BA24x21
- Cabinet shipped without shelf for field installation of accessories. See Accessories and Storage Options brochure.

BA12 x 18 L or R
BA15 x 18 L or R
BA18 x 18 L or R
BA21 x 18 L or R
*BA24 x 18 L or R

BA12 x 21 L or R
BA15 x 21 L or R
BA18 x 21 L or R
BA21 x 21 L or R
*BA24 x 21 L or R



18" or 21" DEEP FOUR DRAWER BASE CABINETS

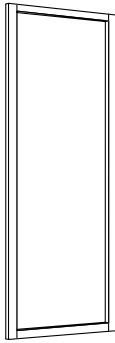
- Three standard depth drawers on top and one deep drawer on bottom

DB12 x 18
DB15 x 18
DB18 x 18
DB21 x 18
DB24 x 18

DB12 x 21
DB15 x 21
DB18 x 21
DB21 x 21
DB24 x 21

WALL CABINET FRONTS

42"

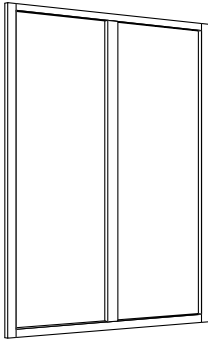


42" HIGH SINGLE DOOR WALL CABINET FRONTS

- Specify L or R door hinging
- Three hinges per door
- * Bel Air and Coronet have two butt doors on WF2442
- Cabinet face frame and door only

WF1242 L or R
WF1542 L or R
WF1842 L or R
WF2142 L or R
*WF2442 L or R

42"

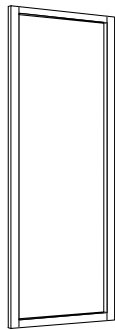


42" HIGH DOUBLE DOOR WALL CABINET FRONTS

- Three hinges per door
- Cabinet face frame and doors only

WF2742
WF3042
WF3342
WF3642
WF4242

36"

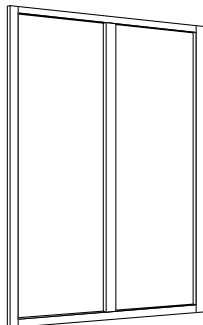


36" HIGH SINGLE DOOR WALL CABINET FRONTS

- Specify L or R door hinging
- Two hinges per door
- * Bel Air and Coronet have two butt doors on WF2436
- Cabinet face frame and door only

WF1236 L or R
WF1536 L or R
WF1836 L or R
WF2136 L or R
*WF2436 L or R

36"



36" HIGH DOUBLE DOOR WALL CABINET FRONTS

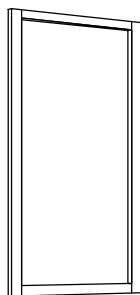
- Two hinges per door
- Cabinet face frame and doors only

WF2736
WF3036
WF3336
WF3636
WF4236

www.armstrong.com

WALL CABINET FRONTS

30"

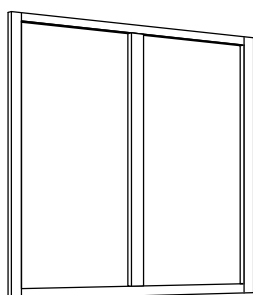


30" HIGH SINGLE DOOR WALL CABINET FRONTS

- Specify L or R door hinging
- Two hinges per door
- * Bel Air and Coronet have two butt doors on WF2430
- Cabinet face frame and door only

WF1230 L or R
WF1530 L or R
WF1830 L or R
WF2130 L or R
*WF2430 L or R

30"

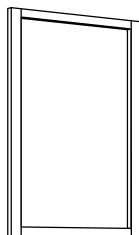


30" HIGH DOUBLE DOOR WALL CABINET FRONTS

- Two hinges per door
- Cabinet face frame and doors only

WF2730
WF3030
WF3330
WF3630
WF4230

24"

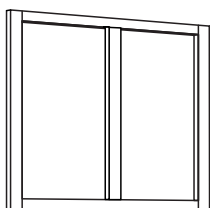


24" HIGH SINGLE DOOR WALL CABINET FRONTS

- Specify L or R door hinging
- Two hinges per door
- * Bel Air and Coronet have two butt doors on WF2424
- Cabinet face frame and door only

WF1224 L or R
WF1524 L or R
WF1824 L or R
WF2124 L or R
*WF2424 L or R

24"



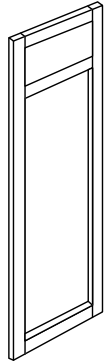
24" HIGH DOUBLE DOOR WALL CABINET FRONTS

- Two hinges per door
- Cabinet face frame and doors only

WF2724
WF3024
WF3324
WF3624
WF4224

BASE CABINET FRONTS

34 1/2"

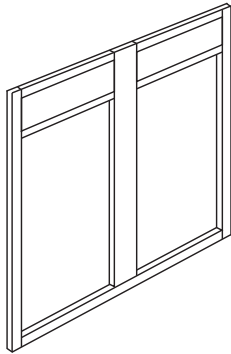


SINGLE DOOR AND DRAWER BASE CABINET FRONTS

- Specify L or R door hinging
- Two hinges per door
- * Bel Air and Coronet have two butt doors on BF24
- Cabinet face frame, door, and drawer front only
- Shipped without toe kick assembly

BF12 L or R
BF15 L or R
BF18 L or R
BF21 L or R
*BF24 L or R

34 1/2"



DOUBLE DOOR AND DRAWER BASE CABINET FRONTS

- Two hinges per door
- Cabinet face frame, door, and drawer front only
- Shipped without toe kick assembly

BF27
BF30
BF33
BF36
BF42

www.armstrong.com

