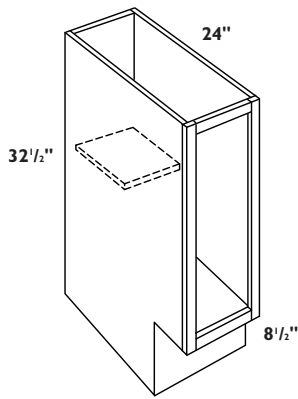


UNIVERSAL ACCESS BASE CABINETS

For All Door Styles

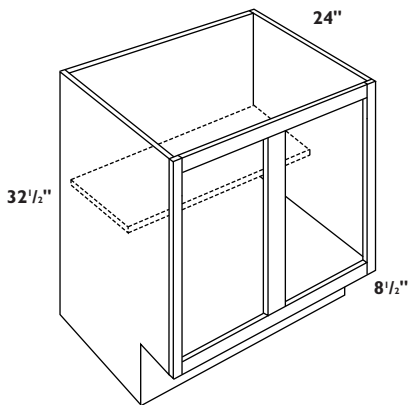
UNIVERSAL ACCESS:
32-1/2" height
with 8-1/2" toe space



UNIVERSAL ACCESS FULL HEIGHT SINGLE DOOR BASE CABINETS

- Specify L or R door hinging
- Two hinges per door
- One 5/8" thick adjustable half depth shelf
- Full height door
- * Calibra, Coronet and Moderno have two butt doors on HCB24FH

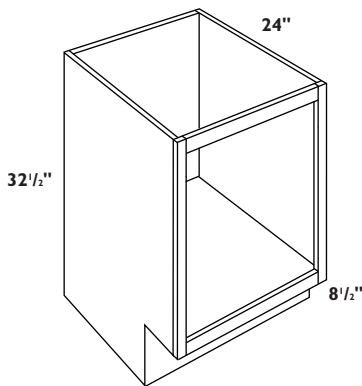
HCB12FH L or R
HCB15FH L or R
HCB18FH L or R
HCB21FH L or R
*HCB24FH L or R



UNIVERSAL ACCESS FULL HEIGHT DOUBLE DOOR BASE CABINETS

- Two hinges per door
- One 5/8" thick adjustable half depth shelf
- Full height door
- * Calibra, Coronet and Moderno have four butt doors on HCB48FH

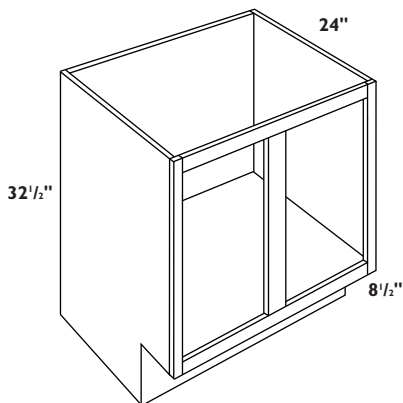
HCB27FH
HCB30FH
HCB33FH
HCB36FH
HCB39FH
HCB42FH
HCB45FH
*HCB48FH



UNIVERSAL ACCESS FULL HEIGHT SINGLE DOOR SINK BASE CABINET

- Specify L or R door hinging
- Two hinges per door
- Full height door
- * Calibra, Coronet and Moderno have two butt doors

HCSB24FH L or R



UNIVERSAL ACCESS FULL HEIGHT DOUBLE DOOR SINK BASE CABINETS

- Two hinges per door
- Full height door
- * Calibra, Coronet and Moderno have four butt doors on HCSB48FH

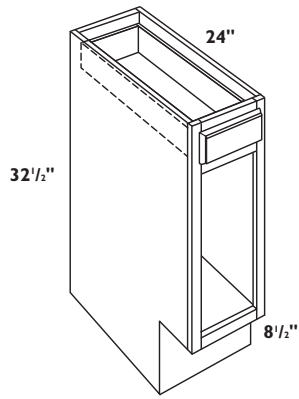
HCSB27FH
HCSB30FH
HCSB33FH
HCSB36FH
HCSB39FH
HCSB42FH
HCSB45FH
*HCSB48FH

www.armstrong.com

UNIVERSAL ACCESS BASE CABINETS

Standard Reveal Only

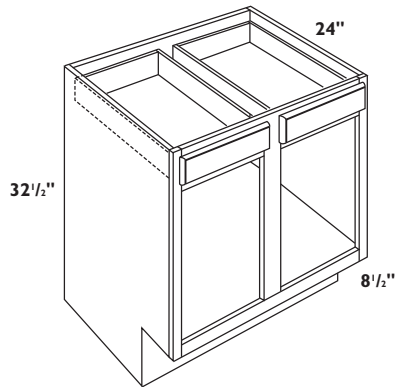
UNIVERSAL ACCESS:
32-1/2" height
with 8-1/2" toe space



UNIVERSAL ACCESS SINGLE DOOR AND DRAWER BASE CABINETS

- Specify L or R door hinging
- Two hinges per door
- One standard depth drawer

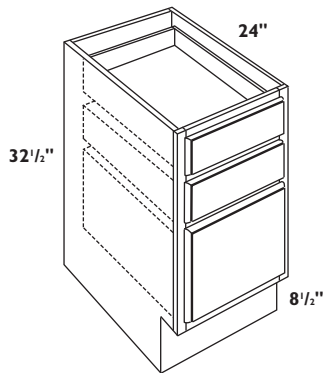
HCBI2 L or R
HCBI5 L or R
HCBI8 L or R
HCBI21 L or R



UNIVERSAL ACCESS DOUBLE DOOR AND DRAWER BASE CABINETS

- Two hinges per door
- Two standard depth drawers

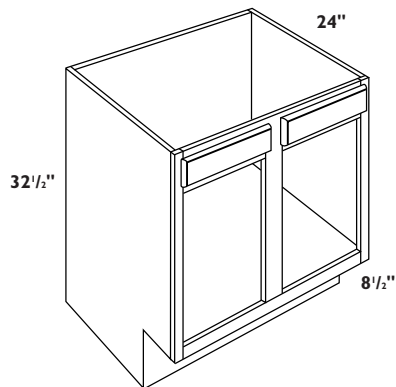
HCB30
HCB33
HCB36
HCB42



UNIVERSAL ACCESS TRIPLE DRAWER BASE CABINETS

- Two standard depth drawers on top
- One deep drawer on bottom
- Does not accommodate metal drawer files

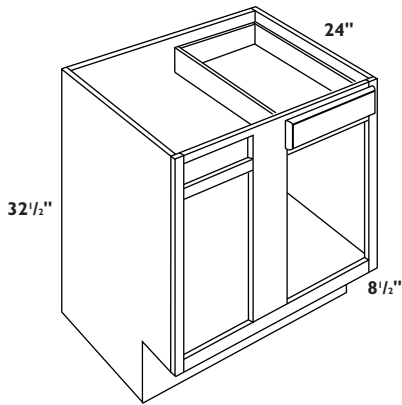
HCDB12
HCDB15
HCDB18
HCDB21
HCDB24



UNIVERSAL ACCESS DOUBLE DOOR SINK BASE CABINETS

- Two hinges per door
- * HCSB30, HCSB33 and HCSB36 have one wide drawer head

*HCSB30
*HCSB33
*HCSB36
HCSB42



UNIVERSAL ACCESS SINGLE DOOR AND DRAWER BLIND BASE CABINETS

- Specify L or R door hinging
- Two hinges per door
- See page 53 for blind cabinet installation instructions
- Filler must be ordered separately. Allow 27" to turn corner.

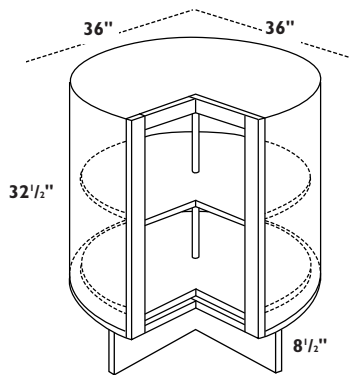
HCBLB36/39 L or R
 HCBLB39/42 L or R
 HCBLB42/45 L or R
 HCBLB45/48 L or R

UNIVERSAL ACCESS BASE CABINETS

Standard Reveal Only

UNIVERSAL ACCESS:
 32-1/2" height
 with 8-1/2" toe space

UNIVERSAL ACCESS



UNIVERSAL ACCESS ROTATING CORNER BASE CABINET

- Specify L or R door hinging
- Two hinges per door
- Requires 36" of wall space on both sides
- Shelf diameter is 24"
- Overall diameter is 26"
- This unit is not designed to be used at the end of a cabinet run or up against appliances. Allow for DWRI (additional 1") of space when using this application.
- Not available in Quadric

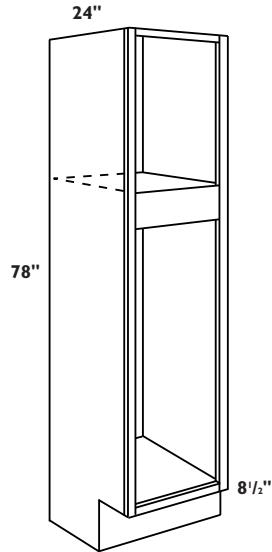
HCCAR36 L or R

UNIVERSAL ACCESS UTILITY & OVEN CABINETS

Standard Reveal Only

UNIVERSAL ACCESS:
8-1/2" toe space

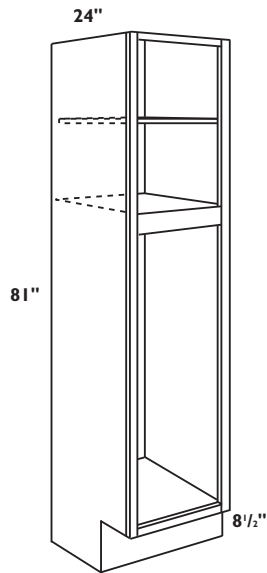
UNIVERSAL ACCESS



UNIVERSAL ACCESS 78" HIGH x 18" WIDE SINGLE DOOR UTILITY CABINET

- Specify L or R door hinging
- 3 hinges per door on lower section
- 2 hinges per door for upper section
- Lower portion of utility cabinet shipped without shelves
- Order UCS1824 shelves separately (see page 80)
- Single door top and bottom

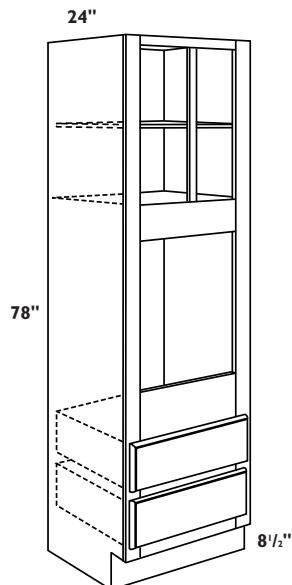
HCUC1824x78 L or R



UNIVERSAL ACCESS 81" HIGH x 18" WIDE SINGLE DOOR UTILITY CABINET

- Specify L or R door hinging
- One 5/8" thick adjustable full depth shelf in upper section
- 3 hinges per door on lower section
- 2 hinges per door for upper section
- Lower portion of utility cabinet shipped without shelves
- Order UCS1824 shelves separately (see page 80)
- Single door top and bottom

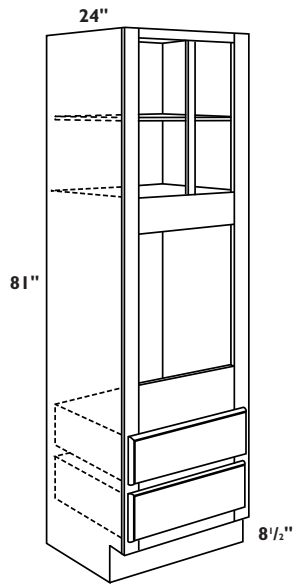
HCUC1824x81 L or R



UNIVERSAL ACCESS 78" HIGH DOUBLE DRAWER OVEN CABINETS

- One 5/8" thick adjustable full depth shelf in upper section
- Two standard depth drawers on bottom
- Trimmable drawers for larger ovens
- See page 84 OV27D, OV30D, and OV33D for minimum/maximum cut out sizes

HCOV27x78
HCOV30x78
HCOV33x78



**UNIVERSAL ACCESS 81" HIGH
DOUBLE DRAWER OVEN CABINETS**

- One 5/8" thick adjustable full depth shelf in upper section
- Two standard depth drawers on bottom
- Trimmable drawers for larger ovens
- See page 84 OV27D, OV30D, and OV33D for minimum/maximum cut out sizes

HCOV27x81
HCOV30x81
HCOV33x81

**UNIVERSAL
ACCESS
UTILITY
& OVEN
CABINETS**

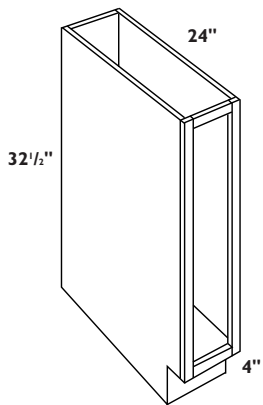
Standard Reveal Only

UNIVERSAL ACCESS:
8-1/2" toe space

UNIVERSAL ACCESS ADAPTABLE BASE CABINETS

For All Door Styles

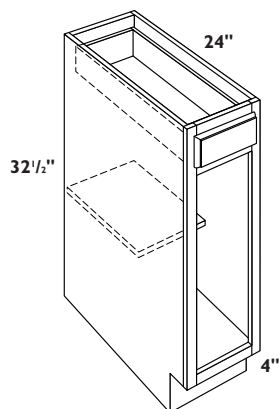
UNIVERSAL ACCESS ADAPTABLE:
32" high with
4" toe space



UNIVERSAL ACCESS ADAPTABLE SINGLE FULL HEIGHT DOOR BASE CABINET

- Two hinges per door
- Specify L or R door hinging
- Full height door

HAB9 L or R



UNIVERSAL ACCESS ADAPTABLE SINGLE DOOR AND DRAWER BASE CABINETS

- One 5/8" thick adjustable half depth shelf
- Two hinges per door
- Specify L or R door hinging
- * Calibra, Coronet and Moderno have two butt doors on HAB24

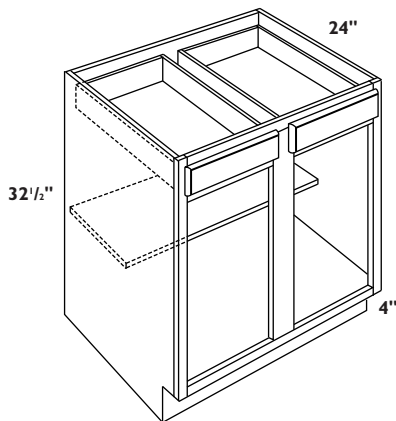
HAB12 L or R

HAB15 L or R

HAB18 L or R

HAB21 L or R

*HAB24 L or R



UNIVERSAL ACCESS ADAPTABLE DOUBLE DOOR AND DRAWER BASE CABINETS

- One 5/8" thick adjustable half depth shelf
- Two hinges per door
- * Calibra, Coronet and Moderno have four butt doors on HAB48

HAB27

HAB30

HAB33

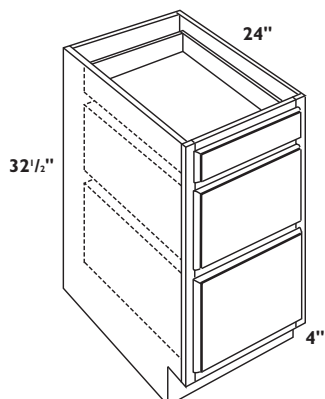
HAB36

HAB39

HAB42

HAB45

*HAB48



UNIVERSAL ACCESS ADAPTABLE TRIPLE DRAWER BASE CABINETS

- One standard depth drawer on top
- Two deep drawers on bottom
- Does not accommodate metal drawer files

HADB12

HADB15

HADB18

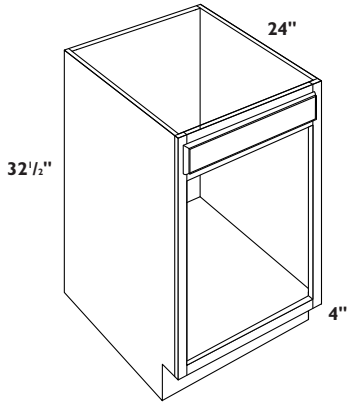
HADB21

HADB24

UNIVERSAL ACCESS ADAPTABLE BASE CABINETS

For All Door Styles

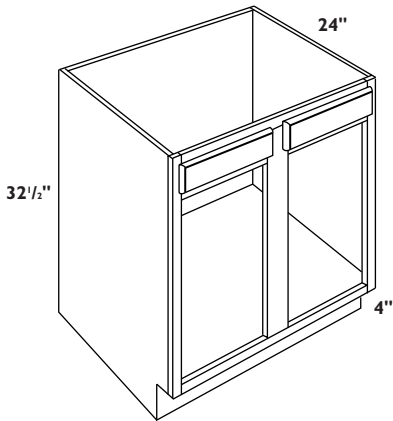
UNIVERSAL ACCESS ADAPTABLE:
32" high with
4" toe space



UNIVERSAL ACCESS ADAPTABLE SINGLE DOOR SINK BASE CABINET

- Two hinges per door
- Specify L or R door hinging
- * Calibra, Coronet and Moderno have two butt doors on HASB24

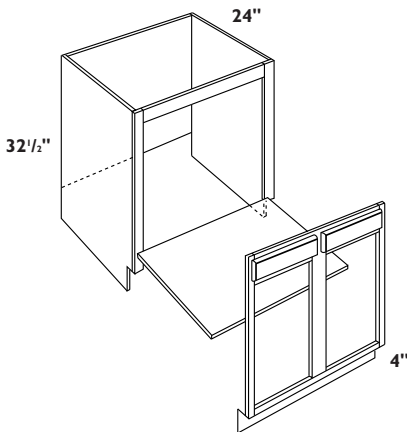
HASB24 L or R



UNIVERSAL ACCESS ADAPTABLE DOUBLE DOOR SINK BASE CABINETS

- Two hinges per door
- * Calibra, Coronet and Moderno have four butt doors on HASB48
- + HASB27, HASB30, HASB33 and HASB36 have one wide drawer head

- +HASB27
- +HASB30
- +HASB33
- +HASB36
- HASB39
- HASB42
- HASB45
- *HASB48



UNIVERSAL ACCESS ADAPTABLE DOUBLE DOOR SINK BASE CABINETS WITH REMOVABLE FRONT

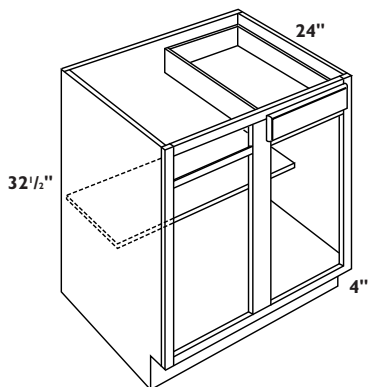
- Two hinges per door
- * Calibra, Coronet and Moderno have four butt doors on HASB48REM

- HASB30REM
- HASB33REM
- HASB36REM
- HASB42REM
- *HASB48REM

UNIVERSAL ACCESS ADAPTABLE BASE CABINETS

For All Door Styles

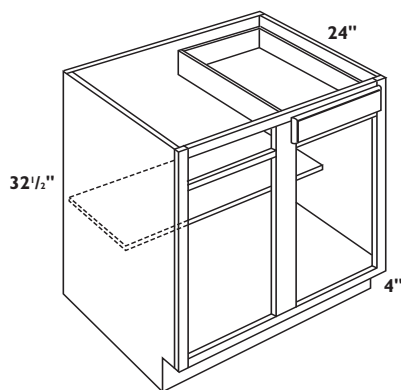
UNIVERSAL ACCESS ADAPTABLE:
32" high with
4" toe space



UNIVERSAL ACCESS ADAPTABLE SINGLE DOOR AND DRAWER BLIND BASE CABINETS

- Specify L or R door hinging
- Two hinges per door
- One 5/8" thick half depth shelf
- Shelf is adjustable on Allwood construction and fixed on Premier construction
- See page 53 for blind cabinet installation instructions
- Filler must be ordered separately. Allow 27" to turn corner.
- When ordering in Full Overlay styles order OBLB filler overlay

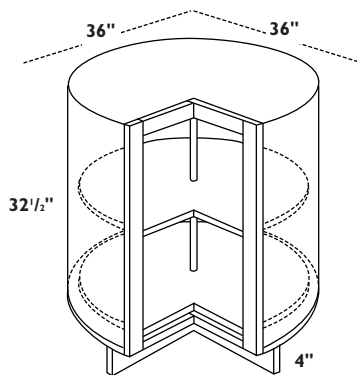
HABLB36/39 L or R
HABLB39/42 L or R
HABLB42/45 L or R
HABLB45/48 L or R



UNIVERSAL ACCESS ADAPTABLE SINGLE DOOR AND DRAWER BLIND BASE CABINET

- Specify L or R door hinging
- Two hinges per door
- One 5/8" thick half depth shelf
- Shelf is adjustable on Allwood construction and fixed on Premier construction
- See page 53 for blind cabinet installation instructions
- Filler must be ordered separately. Allow 27" to turn corner.
- When ordering in Full Overlay styles order OBLB filler overlay

HABLB48/51 L or R



UNIVERSAL ACCESS ADAPTABLE ROTATING CORNER BASE CABINET

- Specify L or R door hinging
- Requires 36" of wall space on both sides
- Shelf diameter is 24"
- Overall diameter is 26"
- This unit is not designed to be used at the end of a cabinet run or up against appliances. Allow for DWR1 (additional 1") of space when using in this application.
- Not available in Quadric

HACAR36 L or R