

Installation Instructions

Contents of the kit:

- 2 8' aircraft cables
- 1 cable cutter
- 2 panel connectors
- 2 top connector assemblies
- 2 3/16" spring toggle bolts
- 1 Definitions™ panel

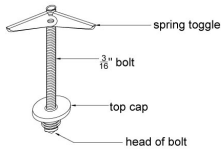
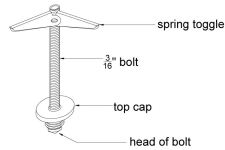


Illustration B

Run the 3/16" bolt through the top cap as shown and then thread the spring toggle on the end of the bolt.



Collapse the “wings” on the toggle and push the toggle through the hole in the drywall. The “wings” will then spring out. Tighten the bolt so the top cap is snug against the drywall. The toggle bolts are to be used with 1/2" or 5/8" drywall only. The toggle bolts will only work if the holes are drilled where there is nothing solid behind the drywall.

If the panels are to be fastened directly to joists or some other substrate, use fasteners that are appropriate for that substrate that will support at least 88 lbs.

Push the end of the cable through the top thimble so the ball on the other end of the cable is captured in the thimble. Then thread the top thimble onto the bottom of the top cap.

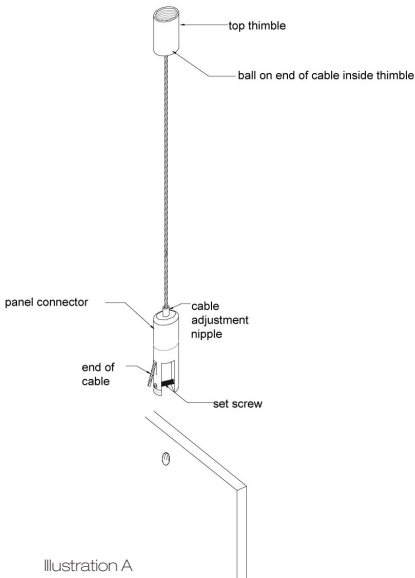


Illustration A

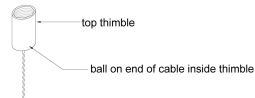


Illustration C

HANG FROM DRYWALL

Determine the desired location for the Definitions panel. To secure the mounting hardware to the drywall ceiling, you will need to drill two 1/2" holes in the drywall. The measurement from the center of one hole to the other is 18".

You are now ready to attach hardware to the panel. Remove the protective film from the panel. Back out the set screw in the panel connector. Place the panel connector over the panel so the hole in the connector (with the set screw) lines up with the hole in the panel. Turn the set screw into the hole in the panel. **DO NOT OVER-TIGHTEN!!** Run the set screw into the hole in the panel until it just touches the other leg of the connector.

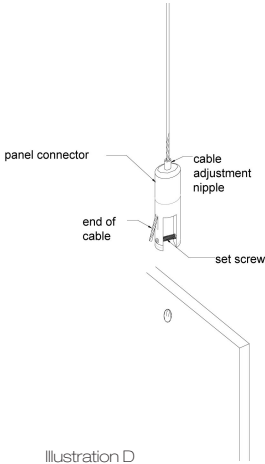


Illustration D

When both cables are suspended as described above, and you have the panel connectors attached to the panels, you are ready to hang the panels.

Feed the cable end into the nipple on the panel connector and push it through the connector until the end comes out the side. Take the weight off the cable and pull the cable through the connector while raising the panel until the panel is at the desired height. If you raise the panel too far, take the weight off the cable, depress the nipple on the panel connector and let the cable slip back through the connector.

When you are satisfied with the height of both cables, cut the excess cable off where it comes out of the panel connector using the cable cutter that comes with the hanging hardware.

If you are hanging the panels from something other than drywall, use fasteners that are appropriate for that substrate that will support at least 88 pounds each. The fastener you choose would be substituted for the 3/16" spring toggle bolt enclosed.

TIE DOWN KIT

An optional accessory is the floor tie-down kit. This is used to keep the Definitions™ panel from swinging either from air flow or from being bumped. The kit contains two bottom connector assemblies, two panel connectors and two short cables.

Determine where you want to secure the two bottom connector assemblies to the floor. Use a plumb bob to help determine these locations. Unscrew the bottom cap from the thimble and secure the bottom cap to the floor. Use a fastener that is appropriate for the floor construction.



Illustration E

Feed the short cable through the thimble so the ball on the end of the cable is captured in the thimble. Screw the thimble to the bottom cap.

Secure the panel connector to the bottom of the panel. Make sure the panel connector is directly above the bottom cap on the floor. Back out the set screw in the panel connector so the connector will fit over the edge of the panel. Place the connector over the bottom edge of the panel. ***Snug*** the set screw against the panel. ***Do not over-tighten the set screw!***

Feed the end of the short cable through the nipple on the panel connector until the cable comes out the side. Pull the cable until it is snug and holds the panel from swinging. Cut off the excess cable with the cable cutter.